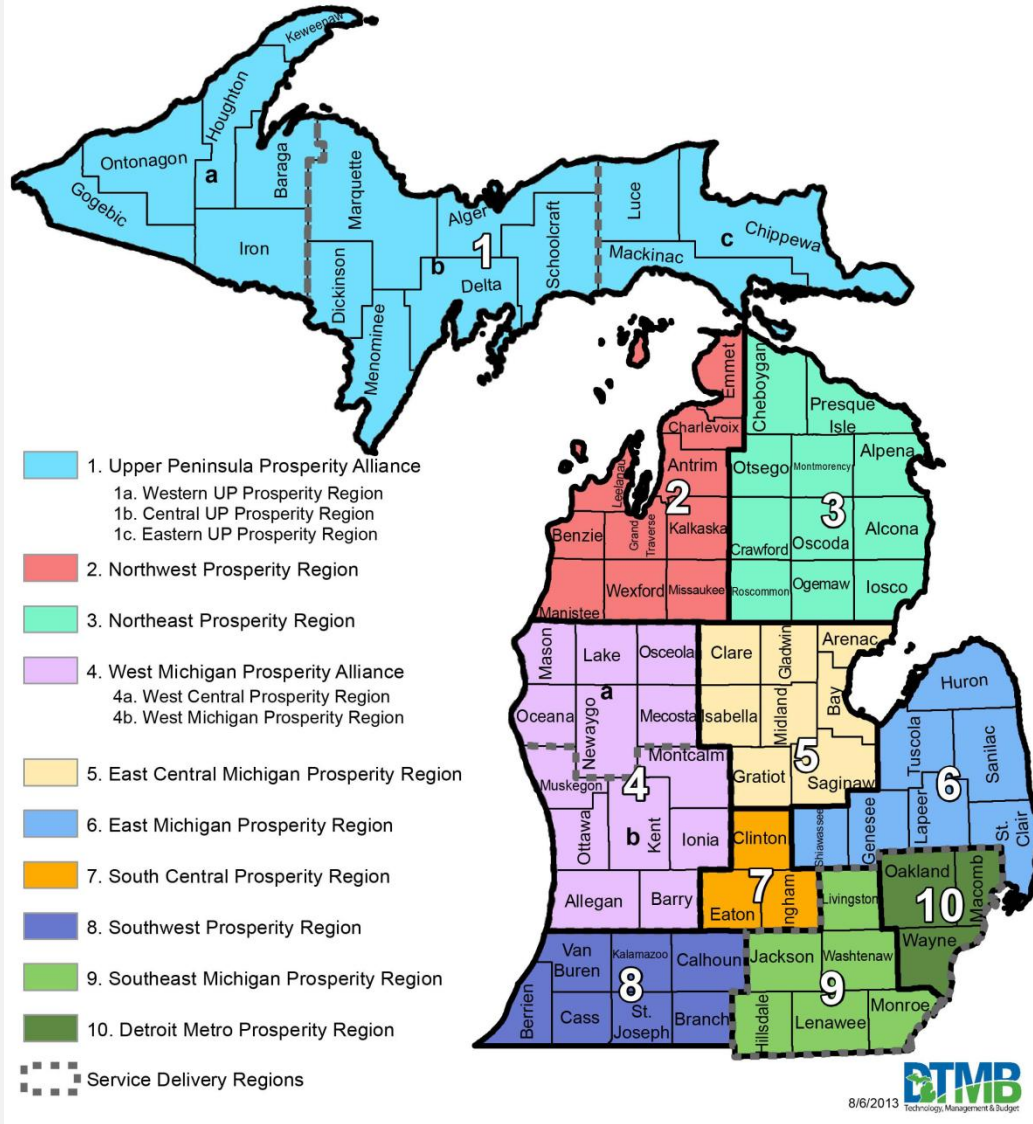


**Region 8
Community
Development**

Regional Prosperity Initiative

- What is it?
 - A state initiative led by Governor Snyder
 - State departments will realign their regional geographies to coincide with each other (map on the next slide)
 - A collaboration platform to promote prosperity within each region

Regional Prosperity Initiative



Regional Prosperity Initiative

- In Region 8...
 - SWMPC is acting as the fiduciary organization and SMPC is acting as the administrative organization
 - Region 8 received a grant in FY 2014 and just recently received a grant for FY 2015
 - Created a Prosperity Committee
 - Produced a Regional Prosperity Plan

Prosperity Plan

- The Prosperity Committee developed and approved the plan in September, 2014
- The plan includes an economic profile, history of the Committee, a vision statement, goals and objectives, and next steps
- *The full plan can be found at the Region 8 Prosperity Committee website – smpcregion3.org/regionalprosperity/*

Vision Statement

Southwest Michigan is recognized as a region where successful, thriving, and innovative people, businesses, and communities prosper through sustainable practices and collaborative development.

Prosperity Plan Goals Themes

- Community Development
 - The focus of today's meeting
- Education
 - Meeting on May 7th
- Infrastructure
 - Meeting on July 2nd
- RPI Strategies
 - No specific meeting

Prosperity Plan – Community Development Goal Theme Statement

*Improve the livability of our region's
communities to attract and retain talented
workers*

Prosperity Plan – Community Development Goals

- Goal 1

- Create a more diversified transportation system

- Create walkable neighborhoods
 - Encourage new transportation patterns that support efficient multi-model transportation options
 - Support community development that is transit-oriented

- Goal 2

- Encourage development of additional recreational opportunities and amenities

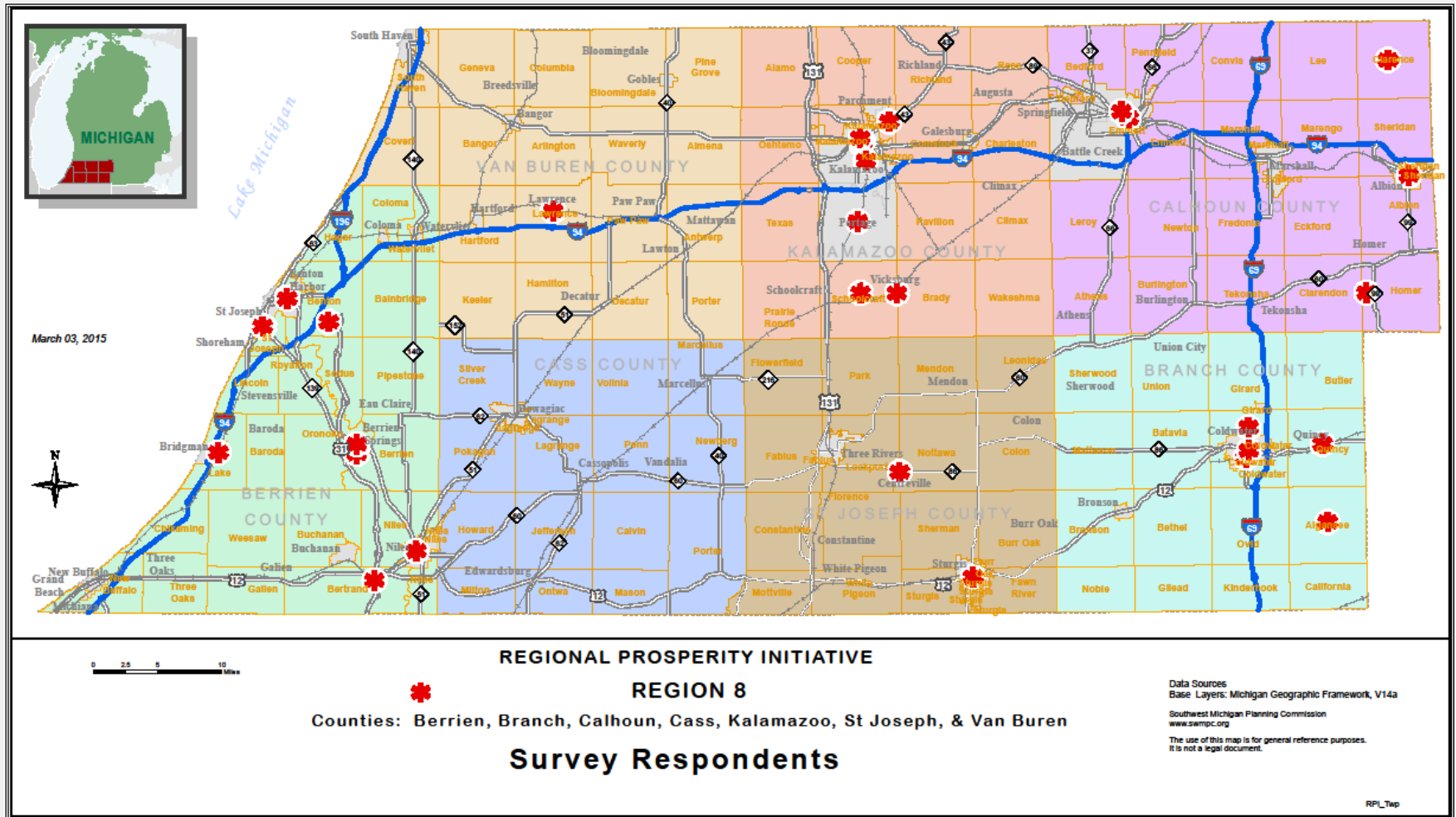
- Encourage an environment where social interactions can occur
 - Promote existing and support development of new trails and natural areas (e.g., parks, recreation areas, rivers, and lakes)

Prosperity Plan – Community Development Goals

- Goal 3
 - Encourage increased access to housing options regarding density, cost, style and location
- Goal 4
 - Support sustainable development
 - Develop infrastructure that can be sustained financially and environmentally over the long term
 - Maintain or improve environmental quality

Community Development Asset Analysis

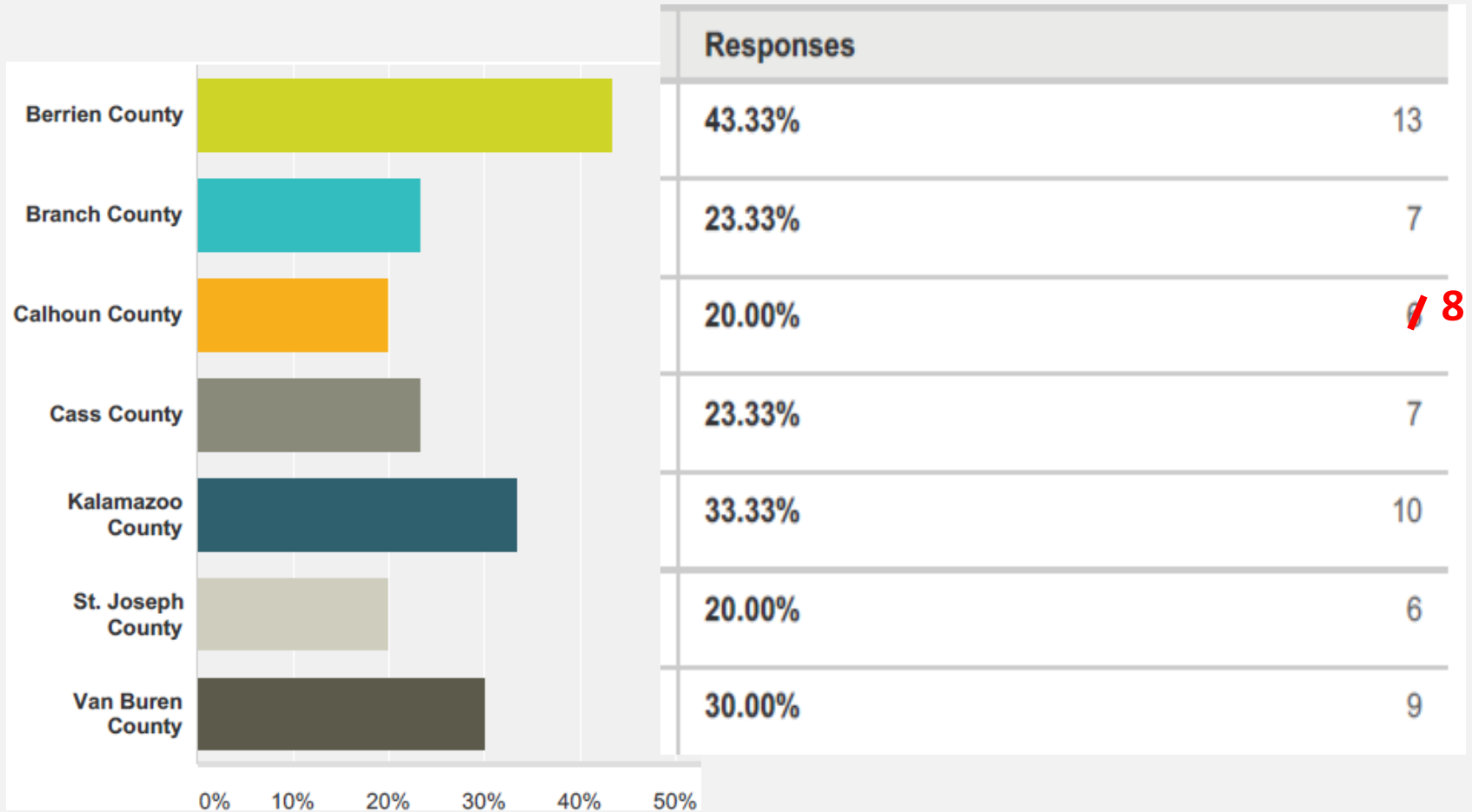
RPI Region 8: Community Development Asset Analysis



- Survey delivered to 247 groups identified as having some role in the sphere of community development.
- 36 total responses (~15% response rate)

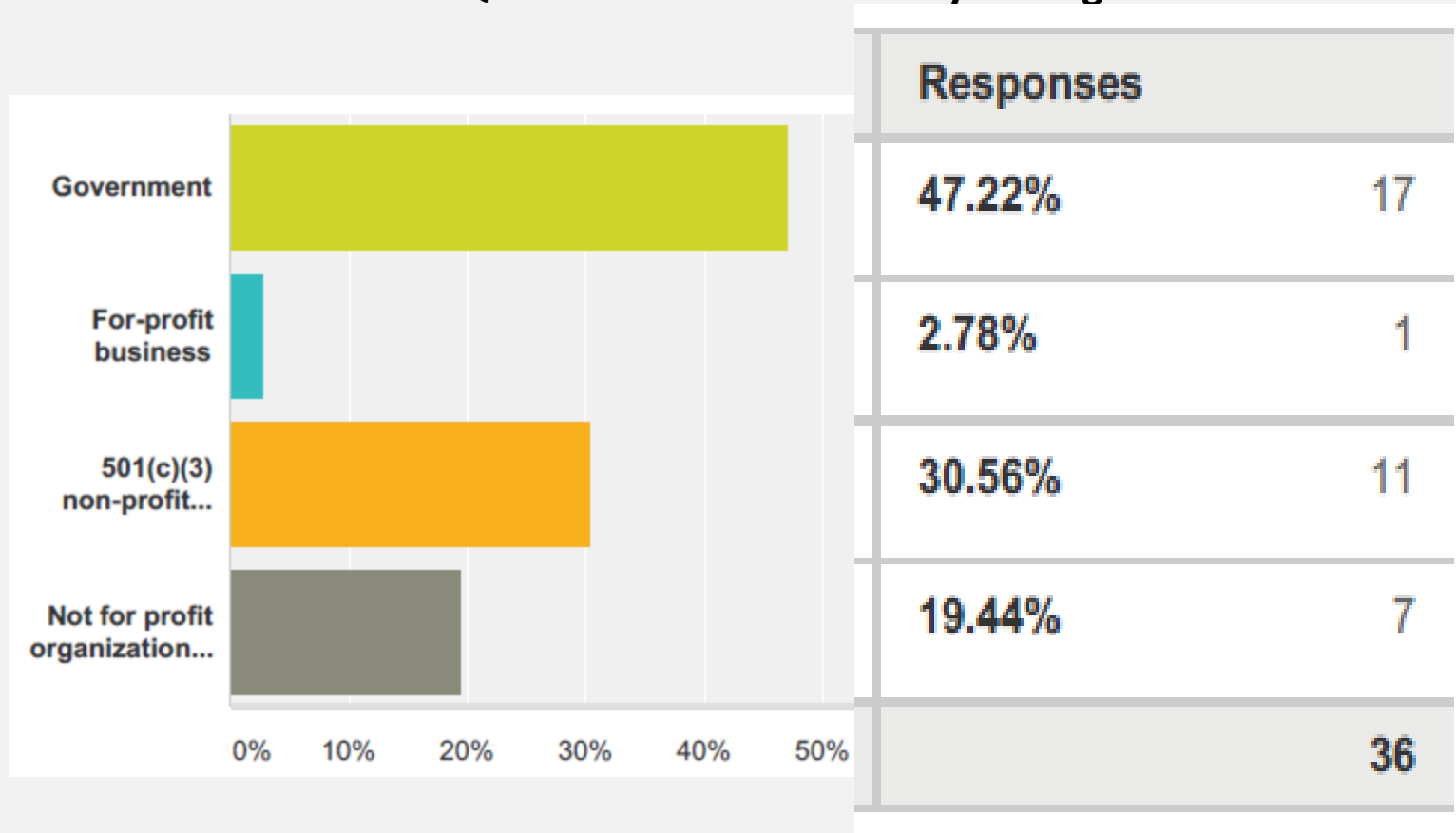
RPI Community Development Survey

Q1: In the course of your Community Development work, what is your geographic reach?



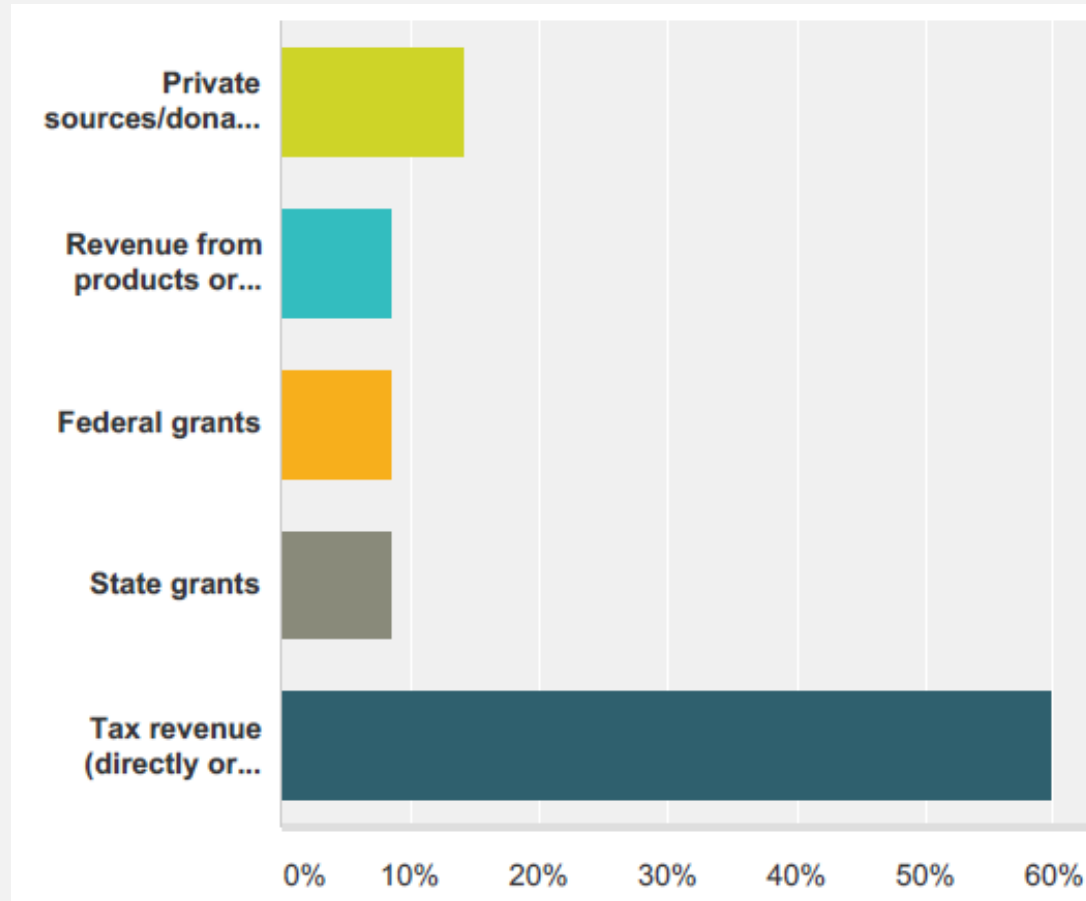
RPI Community Development Survey

Q3: What is the nature of your organization?



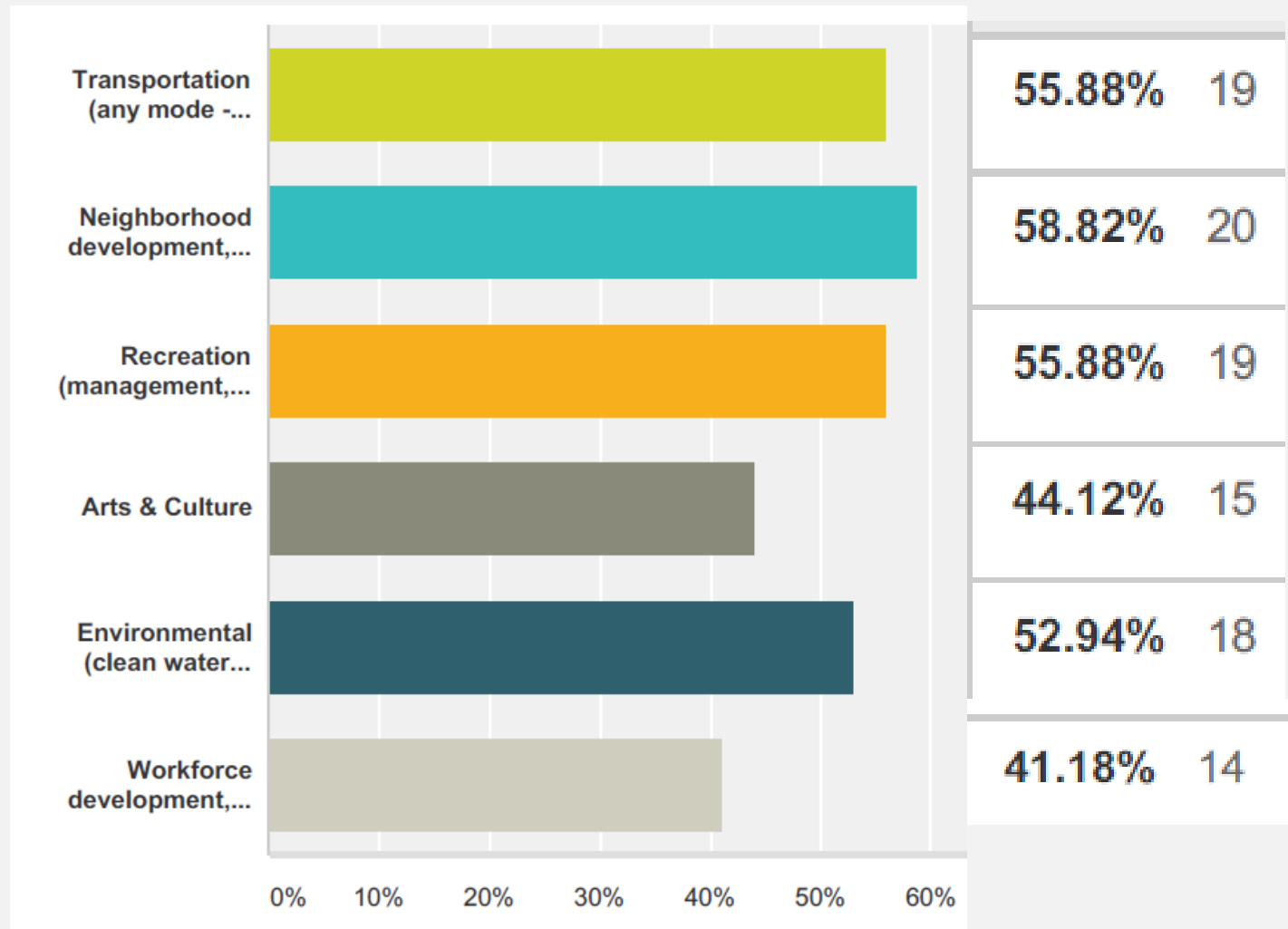
RPI Community Development Survey

Q4: Source of funding?



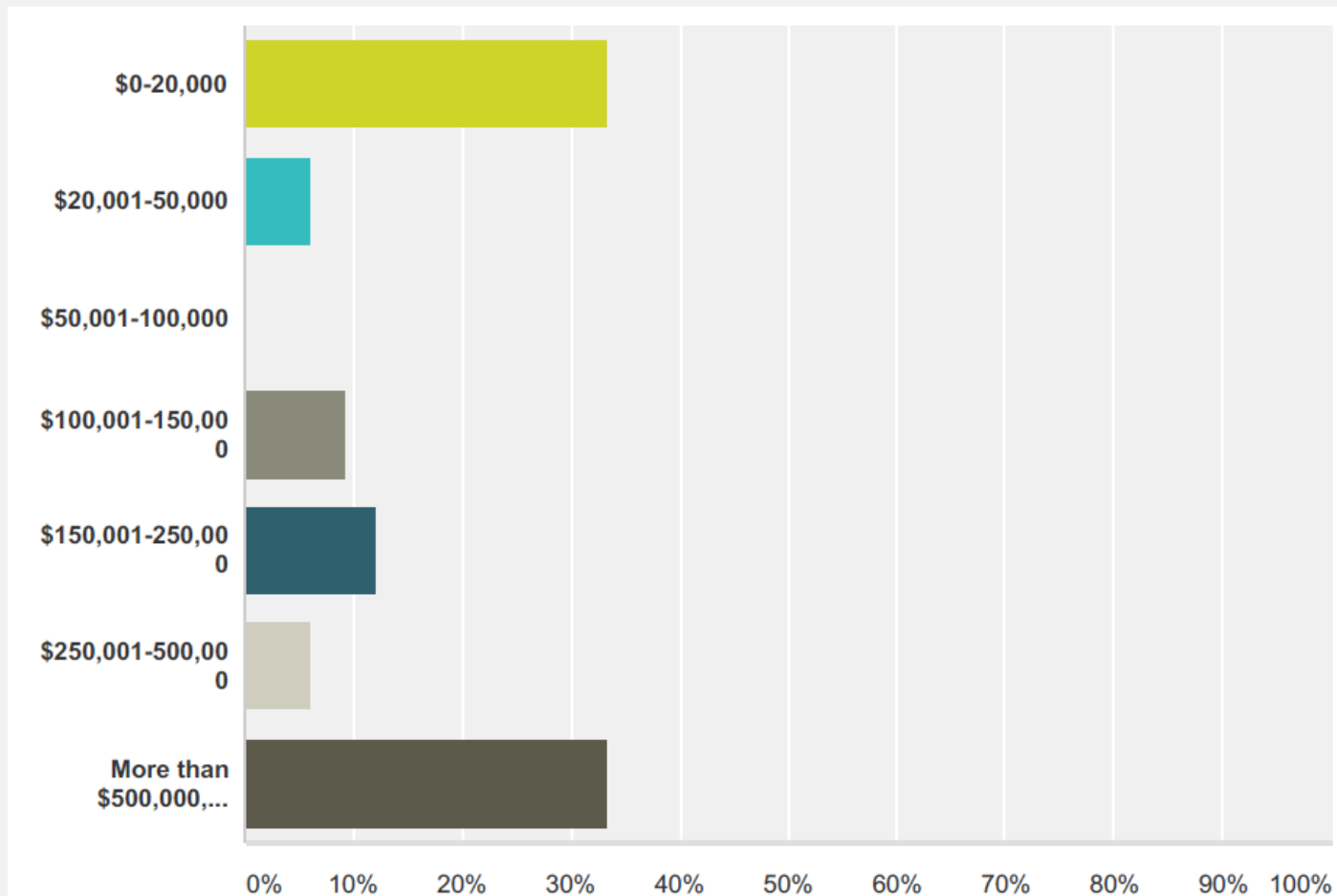
RPI Community Development Survey

Q5: In the last five years has your organization worked in any of the following areas?

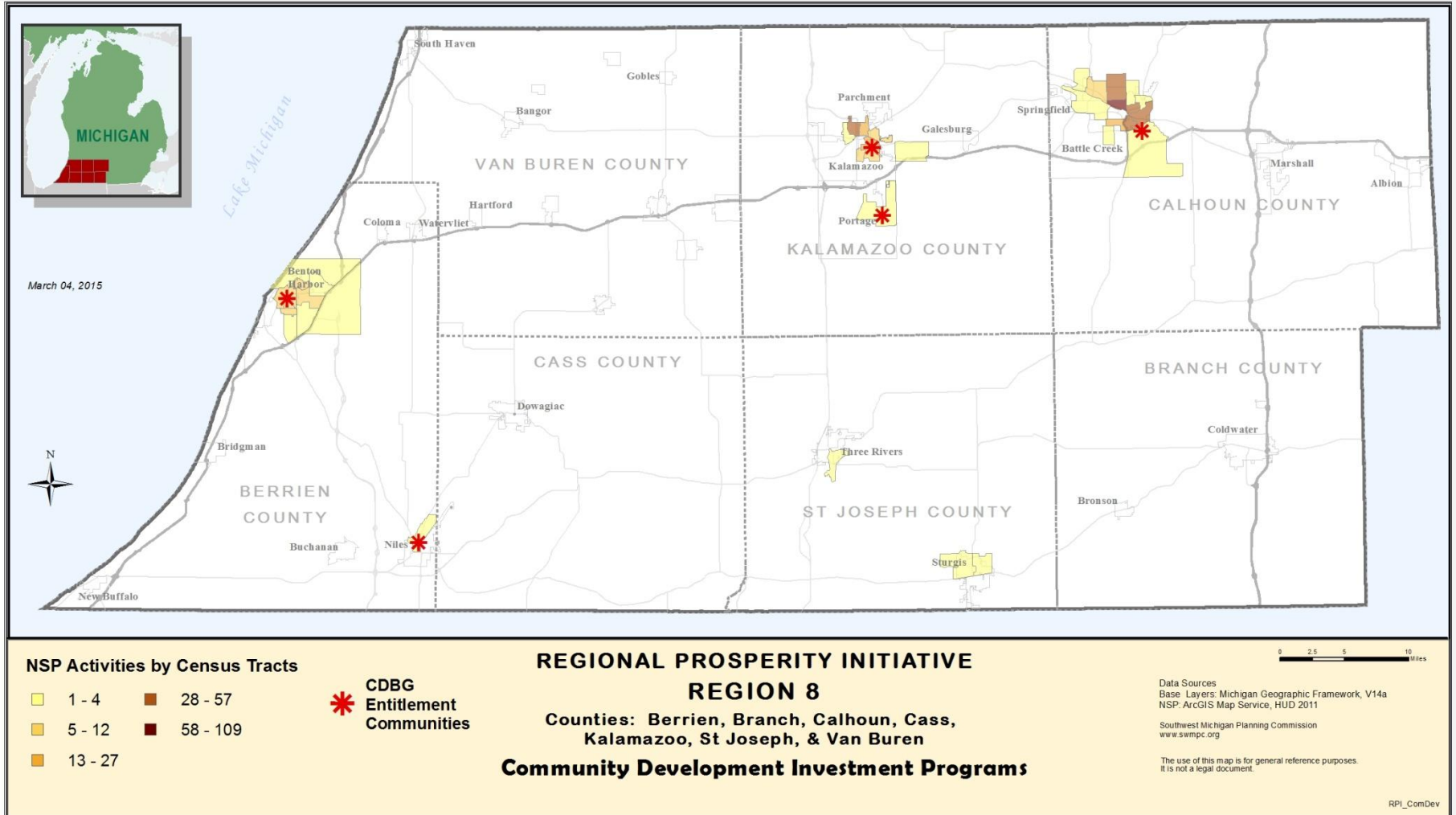


RPI Community Development Survey

Q7: How much has been invested through your organization for Community Development activities within the 7-county region?

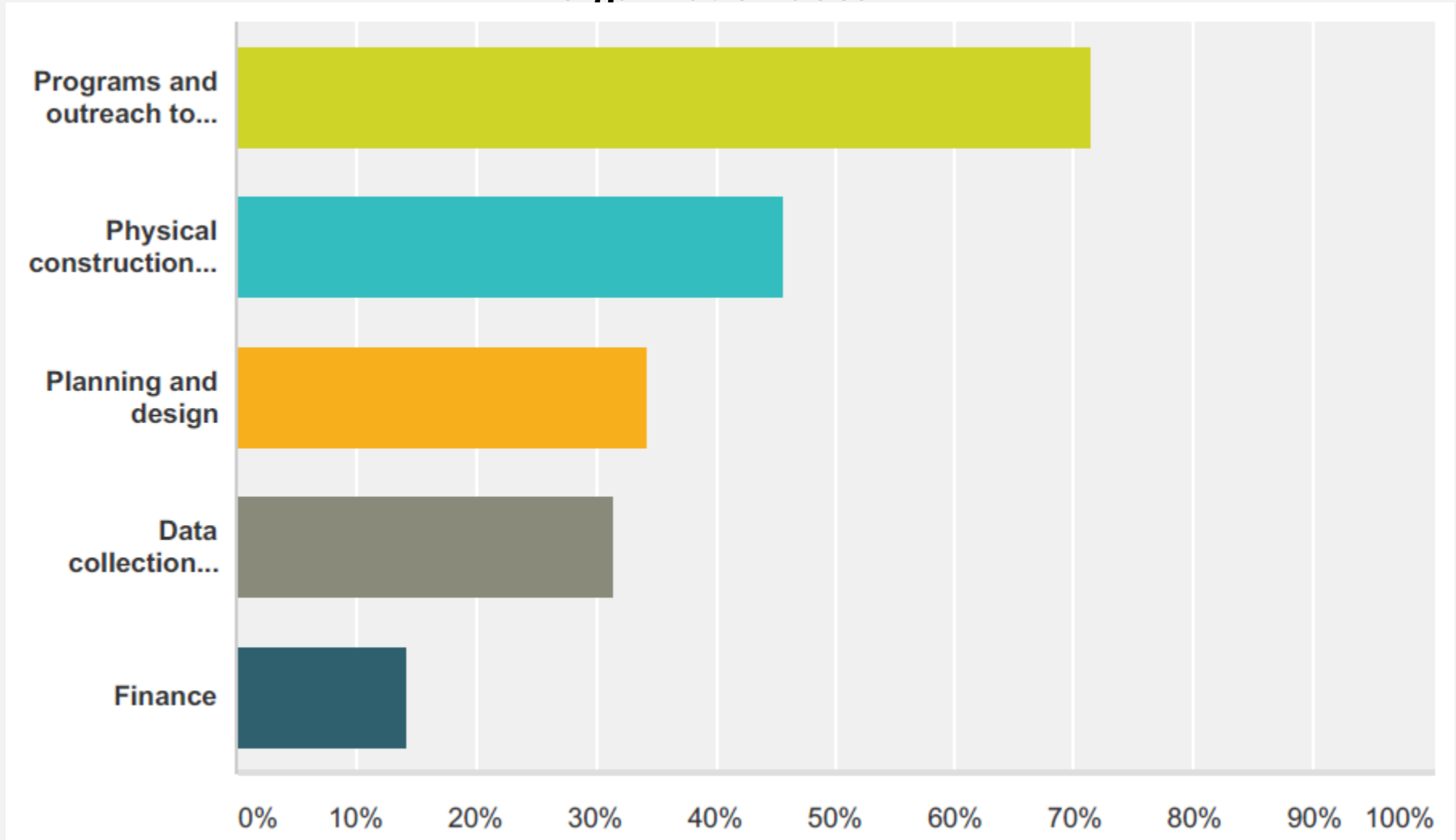


RPI Community Development Survey



RPI Community Development Survey

Q8: How would you classify the Community Development work your organization does?



RPI Community Development Survey

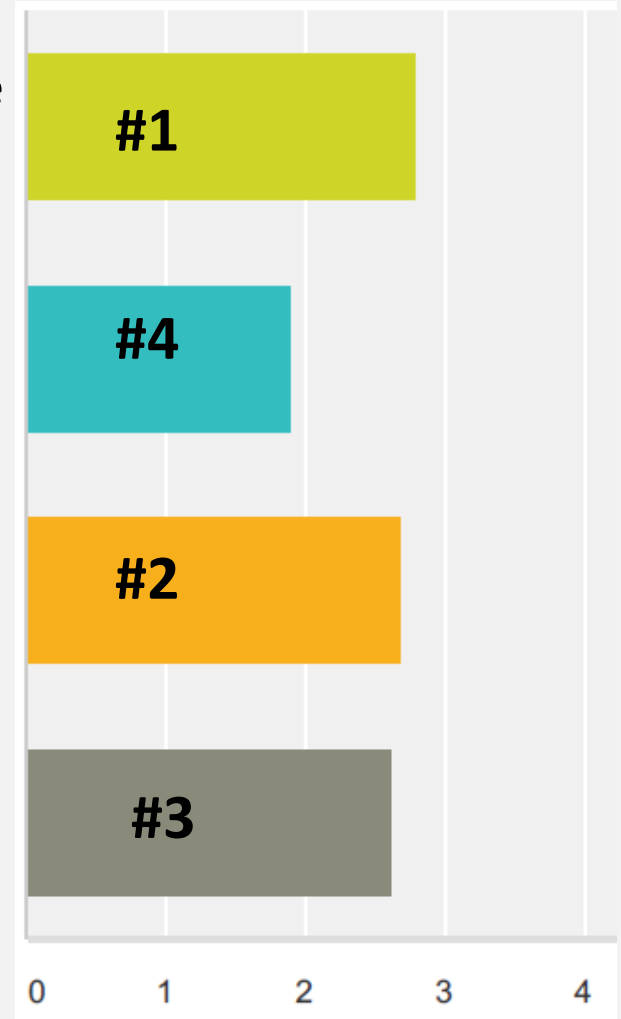
Q8: Prioritize the goals of the RPI from your organization's perspective

Create a more diversified transportation system (more options for better and more efficient movement).

Encourage development of additional recreational opportunities and amenities.

Encourage increased access to housing options regarding density, cost, style, and location.

Support sustainable development (infrastructure that can be sustained financially and environmentally over time; maintain and improve overall environmental quality).



Community Development Goal #1: Create a more diversified transportation system



Service Providers

- Urban
- Small City
- Rural
- No Service
- Loop Service

**REGIONAL PROSPERITY INITIATIVE
REGION 8**

**Counties: Berrien, Branch, Calhoun, Cass,
Kalamazoo, St Joseph, & Van Buren
Public Transit Service Areas**

Data Sources
Base Layers: Michigan Geographic Framework, V14a
Transit: Southwest Michigan Planning Commission, 2015

Southwest Michigan Planning Commission
www.swmpc.org

The use of this map is for general reference purposes.
It is not a legal document.

March 04, 2015

RPI_Transit

Community Development Goal #1:

Create a more diversified transportation system

Regionally Significant Issues	Opportunities
No public transit service: <ul style="list-style-type: none"> • Calhoun County rural area • Portion of Berrien County urbanized area 	Consider options for expansion of existing service provision to meet need.
Commuter service between small towns and nearby centers of commerce lacking. E.g. Mattawan to Kalamazoo	Linkage with transportation modes/options to match the opportunity.
Multi-modal transportation connections and access lacking in areas near bus depots and Amtrak stations	Measure need/opportunity & weigh modal options – understand that <i>timing</i> is vital.
Fragmented non-motorized transportation network (including local sidewalks)	Identify gaps, develop plans to prioritize, fund, and fill gaps.

Community Development Goal #2:

Encourage development of additional recreational opportunities and amenities.

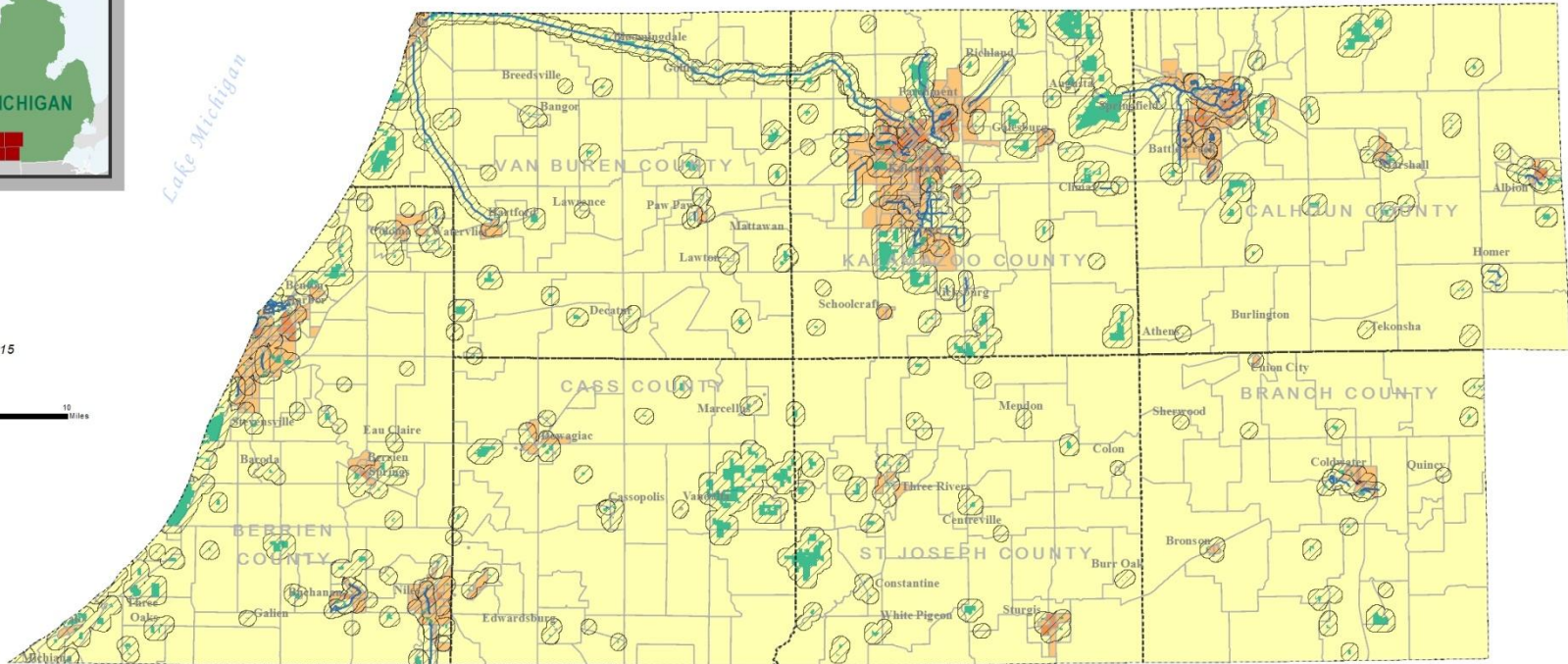
Approximately 50% of the Population Lives Within 1/2 Mile of a Parks or Trail



Lake Michigan

March 04, 2015

0 2.5 5 10 Miles



2014 Population Density (Block Group)

- 0 - 1,000 persons per sq mi
- 1,000 - 4,000 persons per sq mi
- 4,000 - 22,000 persons per sq mi
- 22,000 - 116,000 persons per sq mi
- 116,000 - 618,000 persons per sq mi

- Non-Motorized Trail
- Park
- 1/2 Mile Buffer

**REGIONAL PROSPERITY INITIATIVE
REGION 8**
**Counties: Berrien, Branch, Calhoun,
Cass, Kalamazoo, St Joseph, & Van Buren**
PARKS & RECREATIONAL AREAS

Population within Buffer: 394,426
 Total Population: 778,321

Data Sources
 Base Layers: Michigan Geographic Framework, V14a
 Trail: Southwest Michigan Planning Commission, 2011
 Parks: Southwest Michigan Planning Commission & CARL, 2010
 Population Density: ESRI
 Southwest Michigan Planning Commission
 www.swmipc.org

The use of this map is for general reference purposes.
 It is not a legal document.

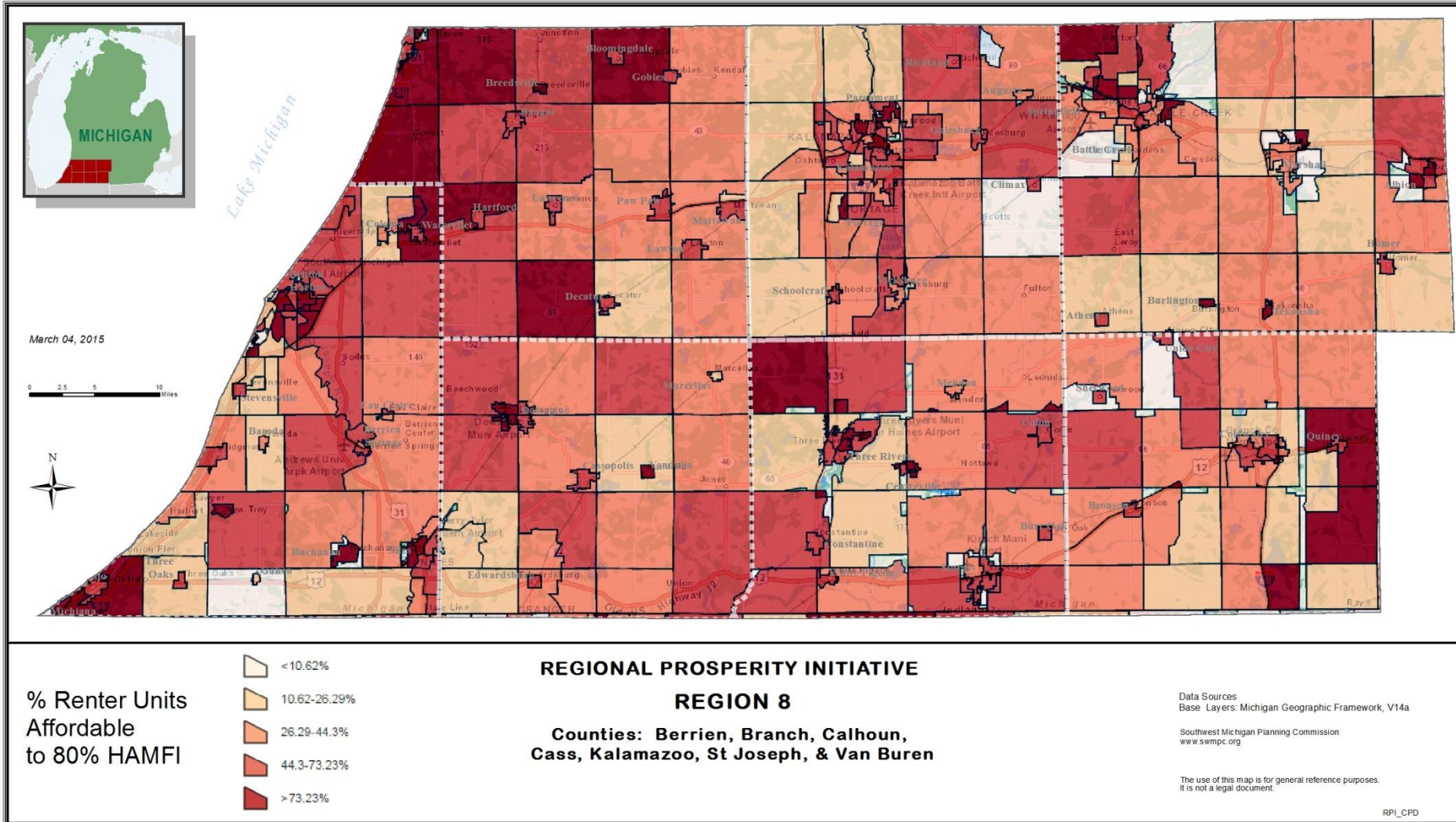
Community Development Goal #2:

Encourage development of additional recreational opportunities and amenities.

Regionally Significant Issues	Opportunities
Access to quality parks and other outdoor recreation assets	Target recreation investments to be in proximity to population density.
Access and availability of arts and culture opportunities	Improve multi-modal transportation throughout region. Encourage geographic spread across region for arts and culture.

Community Development Goal #3:

Encourage increased access to housing options regarding density, cost, style, and location.



Community Development Goal #3:

Encourage increased access to housing options regarding density, cost, style, and location.

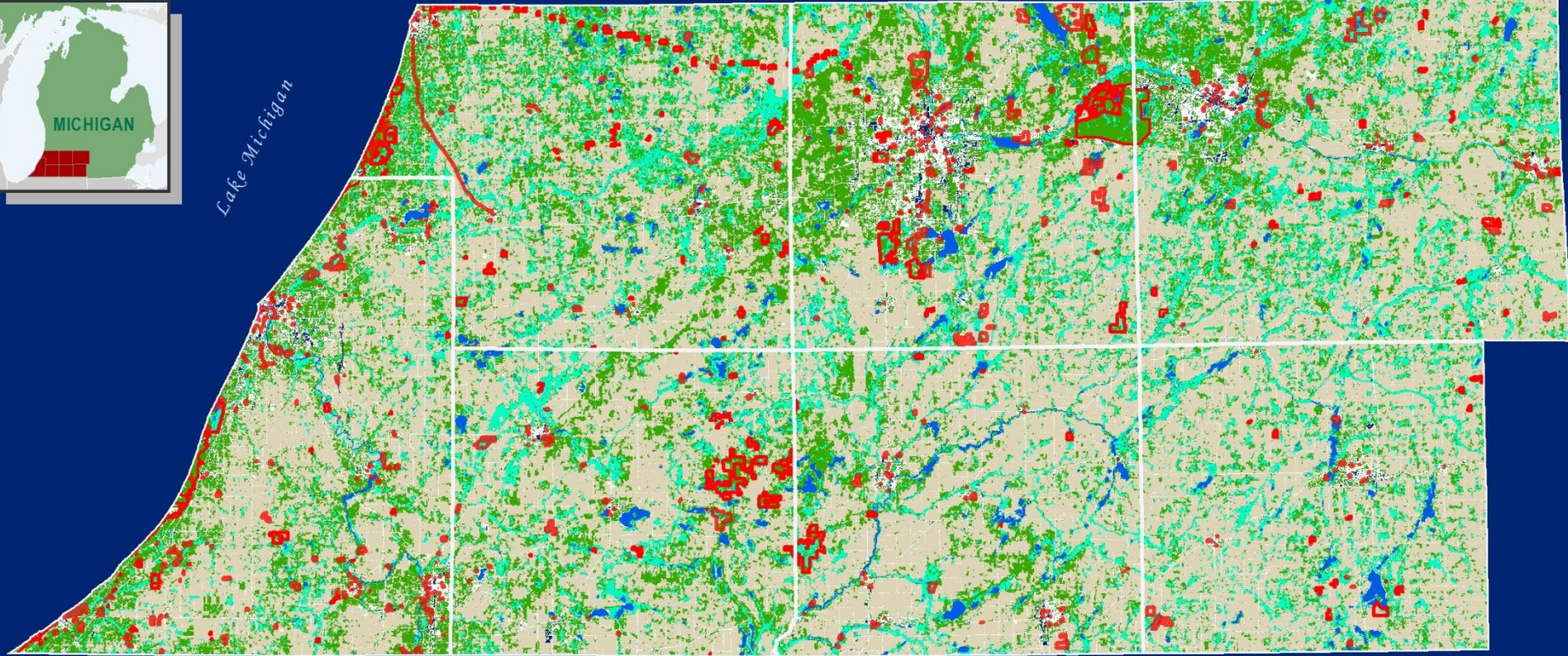
Regionally Significant Issues	Opportunities
The “Missing Middle” housing types.	Revise zoning codes to allow for higher densities and types beyond single-family detached homes in appropriate areas
Aging housing stock in need of repairs and energy efficiency upgrades	Identify most vital housing nodes and systematically upgrade



Community Development Goal #4: Support sustainable development



Lake Michigan



LAND COVER



REGIONAL PROSPERITY INITIATIVE

REGION 8

**Counties: Berrien, Branch, Calhoun,
Cass, Kalamazoo, St Joseph, & Van Buren**

NATURAL AREAS



Data Sources
Base Layers: Michigan Geographic Framework, V14a
Protected Areas are from four sources:
1) Southwest Michigan Planning Commission (SWMPC) 2014
2) Conservation and Recreational Areas (CARL), Ducks Unlimited 2010
3) National Database of Conservation Easement (NCED) 2013
4) Protected Areas Database of the United States (PAD-US), USG 2011

Southwest Michigan Planning Commission
www.swmpc.org

The use of this map is for general reference purposes.
It is not a legal document.

March 04, 2015