



VOLUME 2

5-YEAR PROSPERITY PLAN
SOUTHWEST MICHIGAN PROSPERITY REGION



SOUTHWEST MICHIGAN REGIONAL PROSPERITY INITIATIVE

Prosperity Committee

October 1, 2015

We of the Southwest Michigan Prosperity Region 8 – RPI Collaborative Committee are pleased to offer forth Volume 2 of our 5-Year Prosperity Plan. Volume 2 is the result of continued collaboration among the partners of Region 8 and our platform for demonstrating our efforts in collaborative decision-making in 2015. Volume 2 articulates action strategies developed to drive economic prosperity within our Region and introduces the regionally-significant projects selected for funding by the RPI in 2015.

The Regional Prosperity Initiative (RPI) grant offered us a unique opportunity to work together as a 7-county region to identify our strengths and to lay out a course to promote prosperity in southwest Michigan. In our second year as a Collaborative, the partners of Region 8 were determined to continue on the path to building trust and familiarity, aligning shared assets, and establishing the foundation for a long-term working relationship. We are proud of the progress made in the allocation of funds toward action focused on the prosperity of Region 8.

Our successes this year in gaining participation in the process by an expanded partnership and working as a region to both select and fund projects that are important to the success of the region can be attributed to the hard work of the Collaborative in Year 1 to meet the objectives of a new and evolving initiative and the persistence in Year 2 to ‘keep the ball rolling’.

The Collaborative believes in the premise of empowering locals to drive economic investment. We also believe that this investment will lead to greater quality of place and increase business and talent attraction in our region. We understand that when leaders in the business development, talent development and infrastructure development communities unite, a comprehensive regional economic development strategy can be realized.

The Region 8 – RPI Collaborative commits to continuing our work of regional collaboration to ensure that available resources are targeted where they will have the greatest impact possible for job creators and residents.

Respectfully,

Ben Damerow, Chair
Region 8 – RPI Collaborative

Table of Contents

Letter from RPI Committee Chair	2
RPI 2014 & 2015	4
2015 – Year of Accomplishments	6
2015 Time Line	8
GROWTH OF RPI COLLABORATIVE	10
Existing/Expanded Sectors	12
Committee/Subcommittee Lists	13
RPI Partner / Subcommittee Process	14
BUILDING OF REGIONAL ASSET INVENTORY	17
Representative Asset Maps	18
Asset Maps/Project Samples	20
PROJECT SELECTION	20
Updated Goals/Opportunities	22
Priority Project Areas	24
2015 PROJECTS	26
Selected Projects	27
RPI DASHBOARD DEVELOPMENT	28
Sample Dashboard Content	30
NEXT STEPS	32
APPENDIX	34
Region 8 Asset Inventory	

Michigan is an economic success story that would not be possible without collaboration by public, private and nonprofit sectors. Our shared accomplishments during the past two years underscore the need to work in partnership toward a common vision of economic prosperity. That is the goal of Governor Rick Snyder’s Regional Prosperity Initiative.

— Regional Prosperity Initiative Website

There are many anecdotal examples from around the nation (and the world) where university and community college partnerships were critical to the successes of regional economic development projects.... (including relationships with workforce development entities and knowledge-based businesses)

The biggest challenge for regions is to get all of the stakeholders to the table and talking with each other on a monthly basis....

Regional Reinvention in Michigan, Planning & Zoning News



2014 REGIONAL PROSPERITY INITIATIVE

- ... signed into law as part of the FY 2014 budget (59 PA 2013)
- ... a voluntary competitive grant process offered to existing State Designated Planning Regions and Metropolitan Planning Organizations
- ... designed to encourage local private, public and non-profit partners to create vibrant regional economies

2014

RPI 2014 & 2015

2015 - Region 8 qualified and received funding to continue as a Regional Prosperity Collaborative for a second year. Having already met the Tier 1 requirements for both 2014 and 2015, the following Year 2 work plan was initiated:

- ... Expand participation in the Collaborative;
- ... Formalize the structure of the Collaborative for decision-making;
- ... Provide greater detail to adopted regional goals/opportunities;
- ... Adopt action strategies and select/fund specific projects for each Plan goal;
- ... Expand the regional asset inventory;
- ... Upgrade the regional dashboard in alignment with recently established parameters.



2015 REGIONAL PROSPERITY INITIATIVE

- ... a boilerplate section was added by the legislature to 252 PA 2014 to guide the Regional Prosperity Initiative into the future
- ... Section 890 largely maintains the requirements of the program, with updated requirements for previous grant recipients
- ... authorizes the DTMB to implement an application process and method for grant distribution

2015

2014 - Region 8 qualified and received funding as a Regional Prosperity Collaborative and successfully met the Tier 1 requirements of the RPI

- ... Must include regional representatives from adult education, workforce development, economic development, transportation, and higher education organizations.
- ... Must develop a 5-Year Regional Prosperity Plan - - and adopt the Plan by a 2/3 vote of the Collaborative Committee.
- ... Must develop a performance dashboard and annual measurable goals.
- ... Must meet standard accountability and transparency requirements.

Additional 2014 Achievements:

- ... **Timeliness:** Completed the Tier 1 requirements by the grant established deadline
- ... **Accountability/Transparency:** Well-attended and documented monthly meetings by the Collaborative Committee
- ... **Collaboration:** A significant and tangible move from January through December toward thinking and acting as a single entity
- ... **Energy:** Unanimous support of the 5-Year Prosperity Plan and a Year 2 plan of action

Year of Accomplishments

Beyond the required deliverables of the 2014 grant, Region 8 moved deliberately through 2015 with a focus on collaboration and targeted action that resulted in a year of progress and achievement.



Before the ink was dry on Volume 1 of the 5-Year Prosperity Plan, Region 8 had established an agenda for 2015 that would expand the Collaborative; involve more regional partners in the decision-making process; put regionally significant projects on the table; and, move our regional economic strategies forward.

2015 Time Line



The growth of the RPI Collaborative was multi-dimensional. Consistent with the evolving parameters of the Regional Prosperity Initiative, the sectors represented on the Collaborative Committee expanded. On a separate level, formal structure was given to the Collaborative Committee to allow effective decision-making. A Subcommittee Process effectively expanded regional partner participation and resulted in informed project selection.

Growth of RPI Collaborative

2015

2016

- Expansion of RPI Collaborative from 5 Sectors to 16 Sectors
- Addition of New Sector Representatives to Collaborative
- Election of Officers of the Collaborative
- Adoption of Bylaws for the Collaborative
- Use of Regional Partners in Subcommittee Structure
- Use of the Regional Partner Subcommittees in the Project Selection Process

Expansion of RPI Collaborative

The Collaborative Committee was active in the partnership expansion effort and fully supported the Subcommittees' role in the decision-making process.

EXISTING SERVICE SECTORS

- Adult Education
- Economic Development
- Higher Education
- Transportation
- Workforce Development

ADDED SERVICE SECTORS

- Air Transportation
- Career and Technical Education
- Emergency Manager
- Foundations
- Health Care
- K-12 Education
- Local Government
- Logistics (Freight)
- Private Business
- Rail Transportation
- Regional Planning Agency

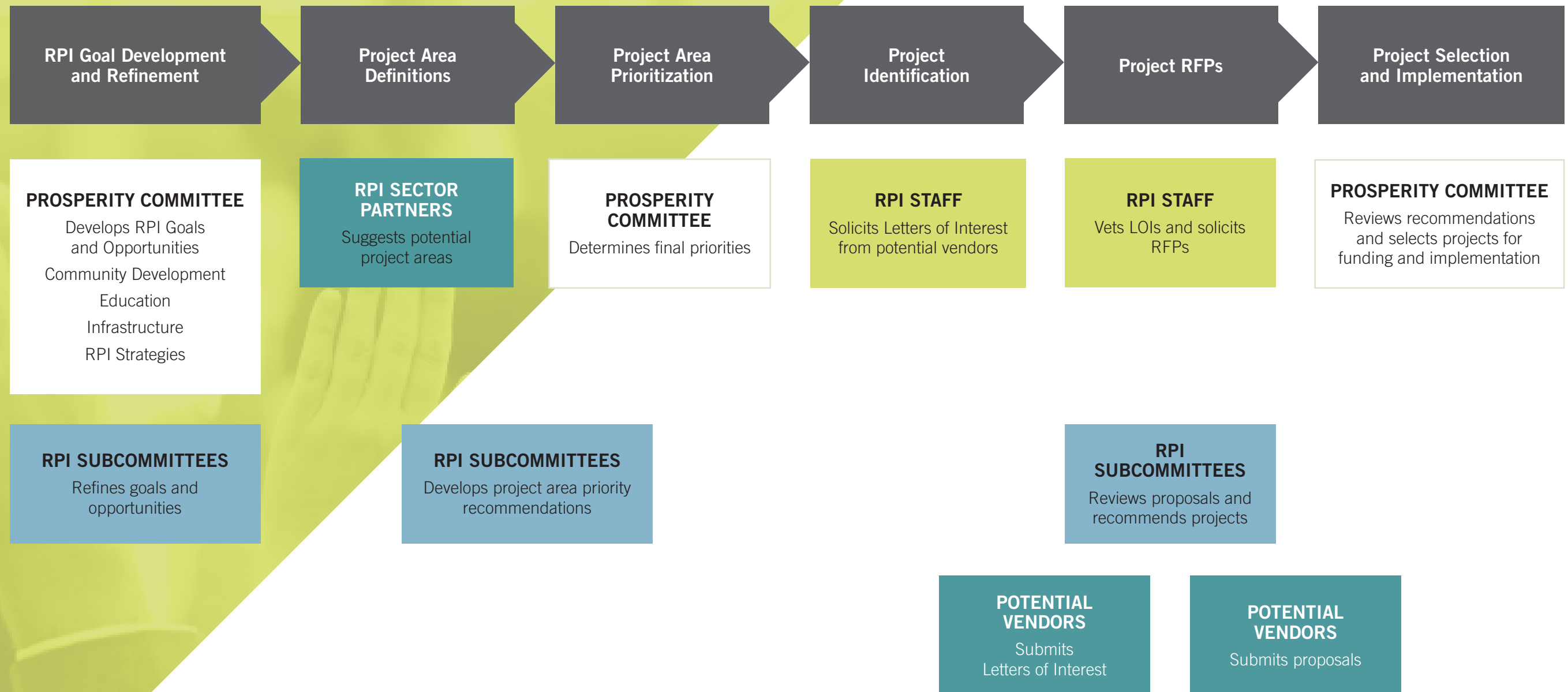
Committee

SERVICE SECTOR	NAME	ORGANIZATION
Adult Education	Michael Evans Lynn Johnson Juanita Miller	Kalamazoo Literacy Council Bangor Adult Education Centreville Public Schools
Economic Development	Jill Bland Jan Frantz Vicki Pratt	Southwest Michigan First Battle Creek Unlimited Cornerstone Alliance
Higher Education	Barbara Craig Luann Harden Jan Karazim	Bertrand Crossing Campus, Lake Michigan College Western Michigan University Southwest Kellogg Community College
Transportation	Dennis Berkebile Jason Latham	Kalamazoo County Road Commission Michigan Department of Transportation – Southwest Region
Workforce Development	Ben Damerow Todd Gustafson	Michigan Works! Southwest Berrien-Cass-Van Buren Michigan Works!/Kinexus
MPO	Pat Karr Jon Start	Battle Creek Area Transportation Study Kalamazoo Area Transportation Study
SMPC	Ron Reid	SMPC Board
SWMPC	Richard Remus	SWMPC Board

Subcommittees

COMMUNITY DEVELOPMENT	EDUCATION	INFRASTRUCTURE	RPI STRATEGIES
Corey Carolla Barbara Craig Jason Latham Juanita Miller Richard Remus Jon Start Greg Vaughn	Kim Bell Jill Bland Dave Campbell Barb Craig Ben Damerow Michael Evans Luann Harden Mike Hoffner Jan Karazim Pam Kingery Becky Rocho Jennifer Searls Linda Snyder	Dennis Berkebile Jan Frantz Lynn Johnson Jan Karazim Pat Karr Ron Reid	Corey Carolla Barbara Craig Luann Harden Jason Latham Richard Remus

RPI Partner / Subcommittee Process



The Subcommittees were used to help build an inventory of regional assets relating directly to the goals of the 5-Year Prosperity Plan. The Subcommittees helped developed the surveys and served as champions of the process to compile the needed information.

The Regional Asset Inventory was used to identify gaps and direct the selection of regionally-significant projects designed to further the goals and economic strategies in the Plan. The Inventory was also tapped to inform the Regional Dashboard.

Building of Regional Asset Inventory

2015

2016

Building Inventory of Regional Assets related to Community Development, Education, Infrastructure, and RPI Strategies

Use of Regional Partner Subcommittees to Develop and Champion Regional Surveys to Build Asset Inventory

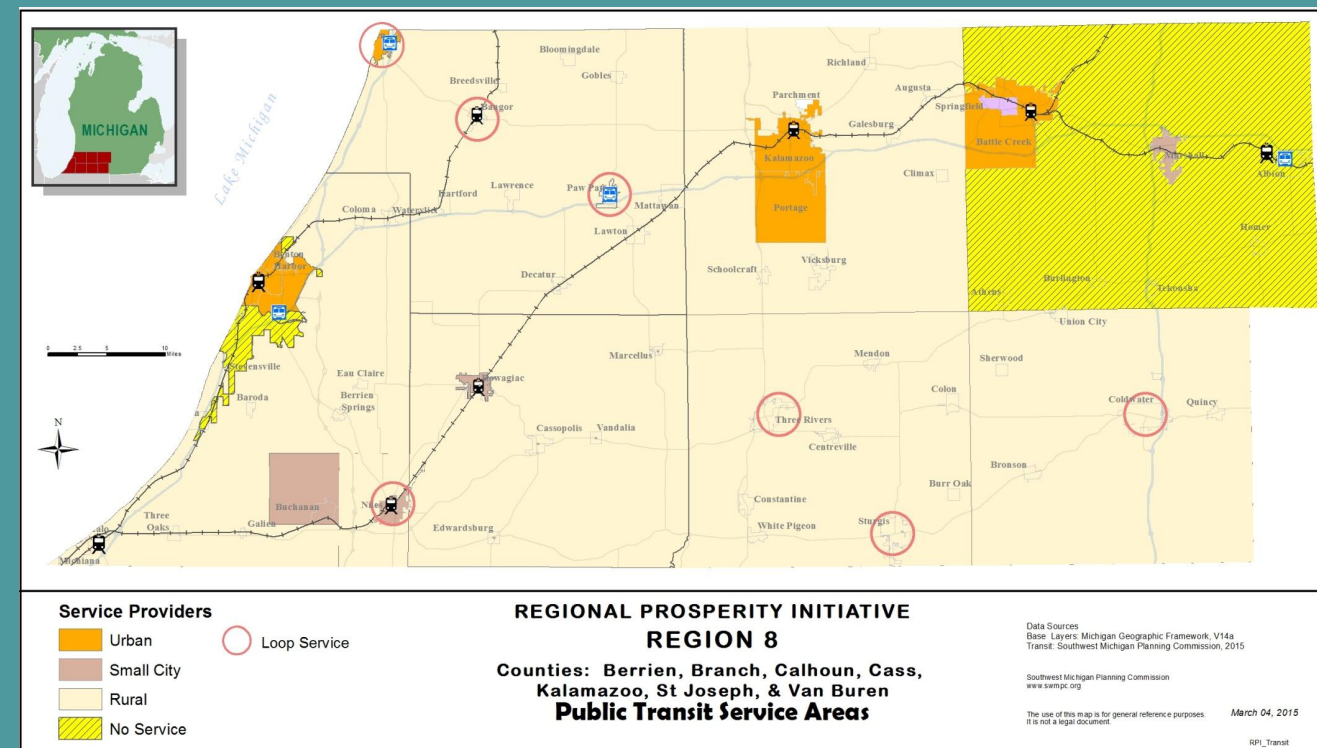
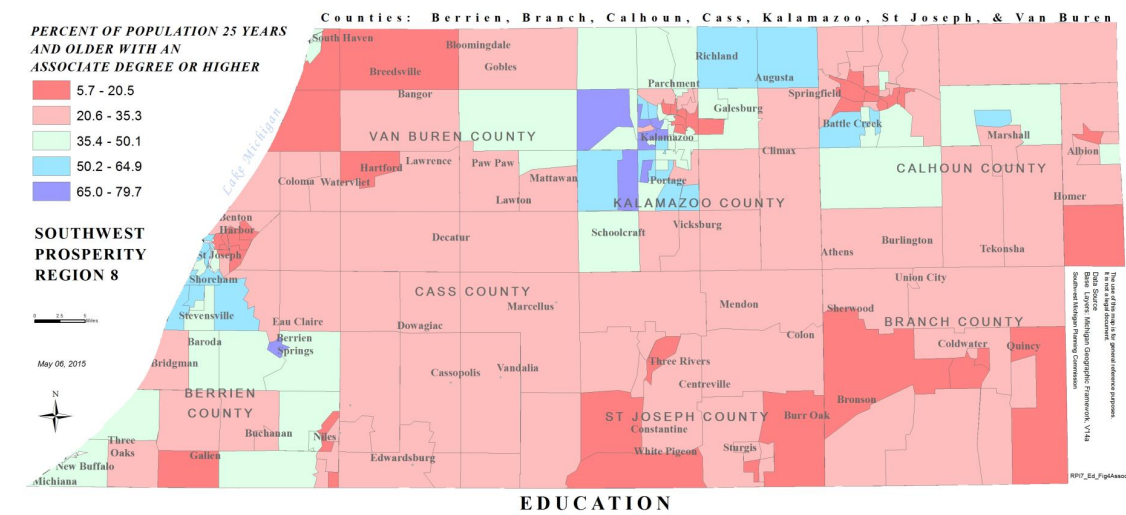
Use of Asset Inventory to Identify Service/Facility Gaps and Direct Project Selection

Use of Asset Inventory to Inform Regional Dashboard

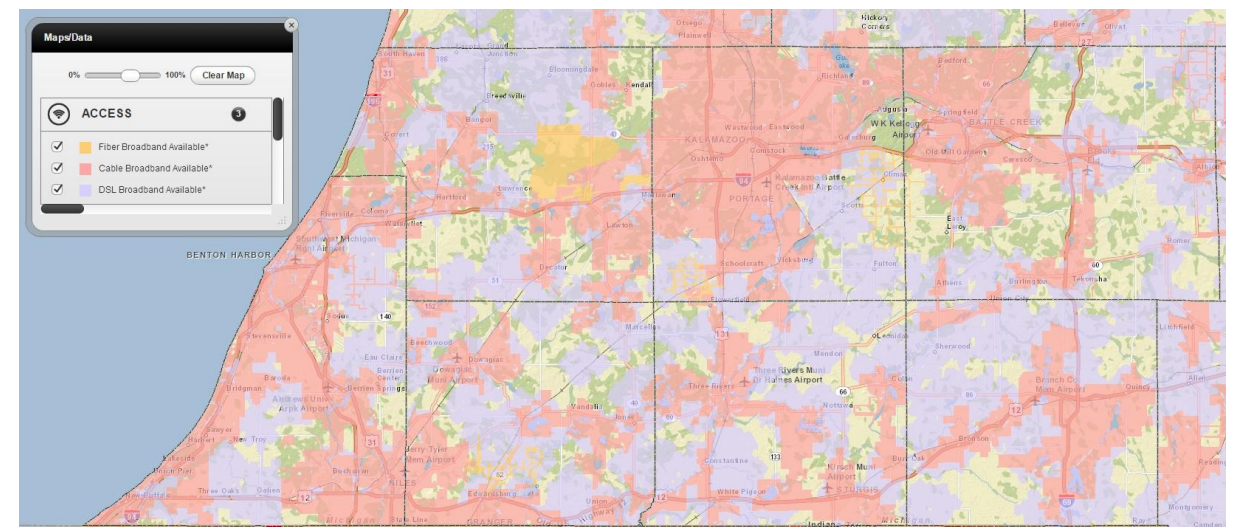
Representative asset maps related to Community Development, Education, and Infrastructure are presented. The complete Regional Asset Inventory compiled to date is set forth in the Appendix of this Plan.

Representative Asset Maps

Educational Attainment Residents 25+ with Associates Degree or Higher



Broadband Availability by Type

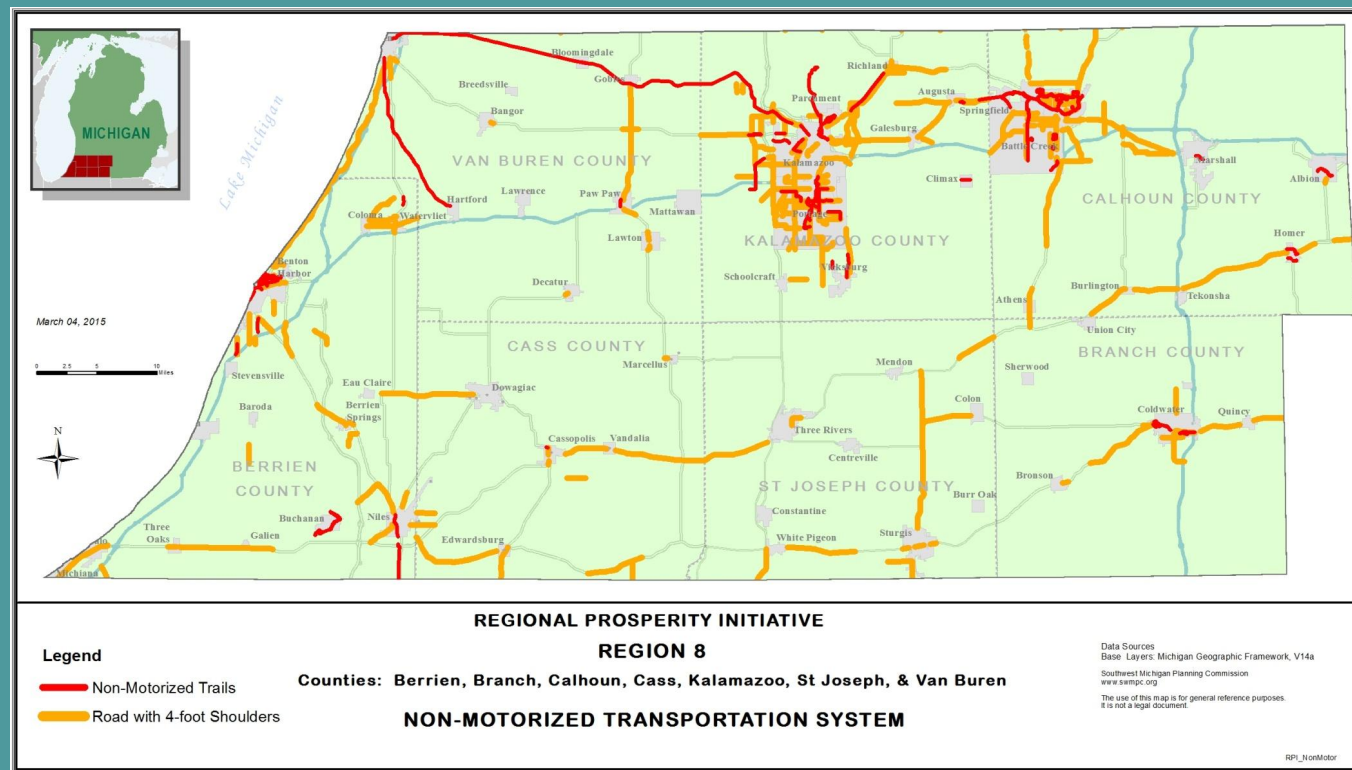


2015

The inventory of parks and trailways within the region provided the foundation for a project proposal for regional trail support.

The inventory of solid waste disposal sites and landfill capacities drove a project proposal for a region-wide recycling plan/program.

Asset Maps/ Projects



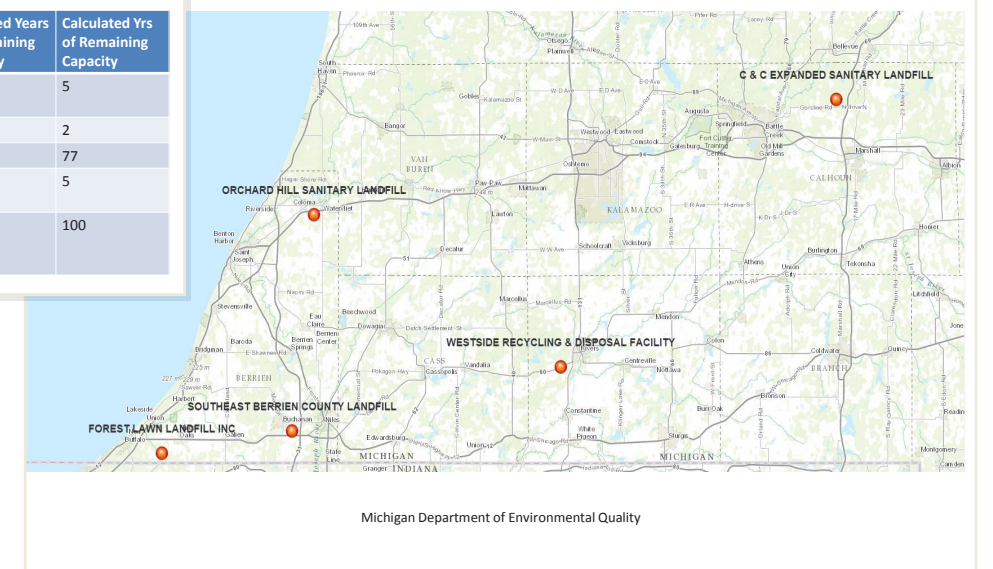
PROJECT:

Monetary support for shovel-ready projects that are focused on the KRVT or trails that tie into our existing regional trail system.

Landfill Capacities & Lifespans

Facility	Remaining Capacity	Capacity Used in 2014	Projected Years of Remaining Capacity	Calculated Yrs of Remaining Capacity
C & C Expanded	2,311,822	507,705	4	5
Forest Lawn	641,648	387,991	2	2
Orchard Hill	17,630,087	229,055	77	77
Southeast Berrien	4,854,326	986,187	23	5
Westside Recycling & Disposal	37,735,372	376,392	115	100

Active Solid Waste Landfills



PROJECT:

Create a region-wide recycling plan . . . including the coordination of recycling strategies/programs among southwest Michigan communities.

2015

The Subcommittee Process was effectively used to involve regional partners in the project identification and selection process.

Project Selection

2015

2016

Collaborate to form Subcommittees that consist of Regional Partners related to each Prosperity Plan Goal (Community Development, Education, Infrastructure, RPI Strategies)

Regional Partner Subcommittees Review and Strengthen Prosperity Plan Goals/Opportunities

Regional Partner Subcommittees Generate and Prioritize Regionally Significant Project Areas

RPI Collaborative Committee Selects Priority Project Areas

Regional Partner Subcommittees Request Letters of Interest (LOIs) and Generate Requests for Proposals (RFPs) for Regionally Significant Projects within Priority Project Areas

RPI Collaborative Committee Approves Funding for Selected Regionally Significant Projects

The Subcommittees provided depth and expertise in the refinement of the goals and opportunities set forth in the Prosperity Plan – Volume 1.

Updated Goals/ Opportunities

COMMUNITY DEVELOPMENT

Improve the livability of our region's communities to attract and retain talented workers

1. Create a more diversified transportation system

- Create walkable neighborhoods
- Encourage new transportation patterns that support efficient multi-modal transportation options
- Support community development that is transit-oriented

2. Encourage development of additional recreational opportunities and amenities

- Encourage the development of additional public spaces in urban, suburban, and rural environments
- Promote existing and support development of new trails and natural areas (e.g., parks, recreation areas, rivers, and lakes)

3. Encourage increased access to housing options regarding density, cost, style and location

- Region-wide Target Market Analysis (better data for that demonstrates the desires of seniors and millennials)
- Mock real estate development
- Education for developers and financiers (housing and demographic trends, community desires)
- Education for community leaders (demolition, land use and zoning, code enforcement)

4. Support sustainable development

- Develop infrastructure that can be sustained financially and environmentally over the long term
- Maintain or improve environmental quality

EDUCATION

Promote talent development and retention to encourage growth and sustainability in all facets of the local economy

1. Promote accessibility and opportunities to participate in education and skilled training programs

- Tailor programs to market demands

2. Promote the coordination, and encourage a larger number, of internships, apprenticeships, across the region and across the continuum of learners

- Regional clearinghouse and website that publicly houses internship/apprenticeship opportunities
 - a. MI internship/apprenticeships website (June ?, 2015)
 - b. College, secondary education and under-skilled workers
- Webpage with links to existing opportunities
- Inventory existing opportunities
- Connect interns to job opportunities

3. Encourage a culture of learning

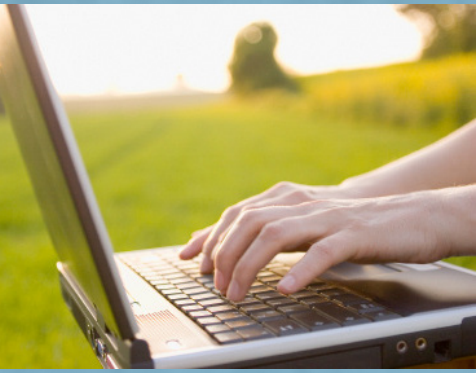
- Provide opportunities for all learners
- Encourage, and promote the personal and regional economic benefits of, lifelong learning
- Promote digital literacy

4. Encourage infrastructure development and interconnectivity to better support education, training, and employment

- Increase mobility: transit and non-motorized
- Increase access to technology: broadband and access to equipment

5. Support work of existing organizations in the following areas:

- Adult education
- Credential acquisition
- Career exploration
- Functional literacy
- Skilled trades
- Employers



Updated Goals/ Opportunities

INFRASTRUCTURE

Encourage expansion and improvement of regional infrastructure

1. Advance the effective and efficient transportation of goods

- Support regionally impactful infrastructure opportunities for the movement of freight (e.g., completion of US-31, US-131 BR/US-131 Interchange Upgrade, three lanes of traffic on I-94 through the region)
- Recognize intermodal freight transportation opportunities (e.g., rail transportation, reliever port for Chicago and Detroit)
- Promote maintenance and improvement of the freeway system and connecting roads
- Promote maintenance and improvement of state and local roads
- Encourage aviation to better support business
- Take advantage of our existing water infrastructure along the Lake Michigan shoreline for the transportation of freight (e.g., freight harbors on Lake Michigan)

2. Assist in cultivating a comprehensive telecommunication system

- Promote region-wide access to telecommunications (broadband, cellular)
- Encourage improved speed and quality of telecommunications infrastructure

3. Advance the effective and efficient transportation of people

- Promote maintenance and improvement of the existing freeway system and connecting roads
- Encourage passenger rail as a viable transportation option for inter and inner regional movement
- Encourage aviation to better support passenger transportation
- Promote coordination of regional mass transportation (e.g., use existing transportation asset inventory)
- Promote non-motorized transportation options

4. Explore and promote a sustainable and economically competitive approach to energy supply

- Promote competitive reliability and cost of energy
- Promote a diversified and sustainable energy portfolio

5. Facilitate a collaborative approach to municipal infrastructure

- Promote coordinated administration of regional water and sewer infrastructure to achieve competitive rates
- Encourage coordinated water and sewer infrastructure planning

RPI STRATEGIES

Advance regional communication and collaboration

1. Further RPI organizational development

- Establish bylaws
- Examine membership and structure
- Connect sectors via communication, collaboration, and information sharing
- Establish RPI as clearinghouse (network versus an extra step)
- Create regional brand, identity, and image
- Establish criteria for addressing policy issues

2. Encourage collaboration among public and nonprofit sectors

- Develop or replicate organizational collaboration model for Region 8 to meet needs in a cost-efficient way
- Develop a platform for regular information sharing among the five sectors (learn what others are doing; process for regular information sharing meetings)
- Encourage coordinated strategic asset management across all seven counties
- Explore tribal strategies
- Collaborate on state and federal grants and projects to ensure projects are shovel-ready (e.g., letters of support)
- Encourage emergency management at a regional level

3. Strengthen the interface between the Regional Prosperity Plan and local plans

- Develop a model for creating plans that fit within the regional strategy
- Align with state and federal agencies to inform them about RPI goals
- Encourage individual municipal strategies are tied to the regional prosperity plan (including planning)

The Subcommittee Process was at the heart of the Collaborative project selection. The asset inventory and refined goals/opportunities were used by the Subcommittees to define Project Areas. These were then presented to regional partners with requests for project proposals that would align with the specific Project Areas. The Subcommittees worked to prioritize all project proposals for Committee approval.

Priority Project Areas

COMMUNITY DEVELOPMENT

- No common media system within southwest Michigan to communicate.
- Contaminated/blighted property redevelopment; create “redevelopment-ready” property.
- Regional parks/recreation system plan (potentially including non-motorized pathways).
- Promote a system that supports the growth, processing, purchase, and distribution of regional food.

EDUCATION

- Infrastructure development and inter-connectivity to better support education, training, and employment.
- Support work of, and develop a communication conduit for, existing education organizations to coordinate internships and apprenticeships.
- Rebuild and focus assets on developing infrastructure for reaching adult illiterate population.
- Promote the coordination, and encourage a larger number, of internships, apprenticeships, and across the region and across the continuum of learners within the outside the formal school structure.

RPI STRATEGIES

- Facilitate interconnectivity between partners of the Regional Prosperity Initiative.

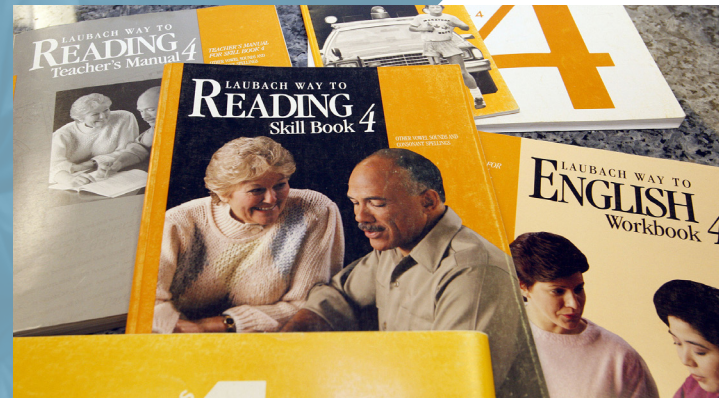
INFRASTRUCTURE

Top Tier

- Region-Wide Recycling.
- Create a region-wide solid waste master plan and/or a region-wide recycling plan.
- This project would also include coordination of recycling strategies and programs among communities in southwest Michigan.

Second Tier

- Telecommunication (mostly broadband).
- Identify telecommunication gaps and help to fill them.
- This could empower many to pursue higher levels of education or employment opportunities. It could also enable telemedicine.
- Encourage funding for the expansion of I-94.
- Evaluate the economic impact of current capacity of I-94 and contrast that with the economic impact of an expanded I-94.
- Lobby local, state and federal officials and legislators for funding.
- Map the water and sewer systems in southwest Michigan.
- Create a digital inventory of the sewer and water systems in southwest Michigan.
- Potentially include capacity in the maps.



The projects awarded funds in 2015 were selected based upon the following criteria:

- Geographic scope
- Accomplishes the area of focus
- Potential for early success
- Supports regional collaboration
- Significance of impact
- Innovation in scope or efficiency
- Access to funding
- Organizational capacity

These first projects to gain the support of the partners of the Region 8 – RPI Collaborative are success stories of the Initiative and represent the ability of Region 8 to understand the power of a common vision and strategy for economic prosperity.

2015 Projects

RPI COLLABORATIVE AWARDS \$ TO THE FOLLOWING REGIONALLY SIGNIFICANT PROJECTS:

\$37,500

Community Development

- Regional Food System and Mapping Analysis
- Food Hub Marketing Initiative

\$40,000

Education

- Southwest Michigan Community Literacy Initiative
- Portage English as a Second Language (ESL) Program

Infrastructure

- Lorem ipsum delores...
- Lorem ipsum delores...

RPI Strategies

- Regional Communication Software

2015

2015 Projects

COMMUNITY DEVELOPMENT PROJECTS

Regional Food System Mapping and Analysis

Create the data needed to assess the existing conditions; match producers and consumers; and convene agriculture industry stakeholders. This effort will support the growth of the regional agricultural industry by enabling support from local units of government, private businesses, economic developers, and workforce developers while making connections between buyers and sellers of agricultural goods.

- Encompasses the entire 7-county area of Region 8
- Broad range of partners (including SMPC, W.E. Upjohn Institute, KVCC, City of Kalamazoo, City of Battle Creek, Battle Creek Unlimited, Southwest Michigan First, local restaurant consortium)
- Furthers Community Development Opportunity: 'Promote a system that supports the growth, processing, purchase, and distribution of regional food.'

Food Hub Marketing Initiative

Create and implement a comprehensive marketing campaign for Sprout Food Hub to promote the locally grown and produced food that is aggregated and distributed through the regional food hub. This campaign will build on established and emerging market opportunities and school and community programs and will benefit local growers, food entrepreneurs, and residents by increasing sales of local produce and value-added products.

- Encompasses the entire 7-county area of Region 8
- Partners include the local network of growers and producers, local food entrepreneurs, school farm markets, local career centers, other organizations that promote local food.
- Furthers Community Development Opportunity: 'Promote a system that supports the growth, processing, purchase, and distribution of regional food.'

EDUCATION PROJECTS

Southwest Michigan Community Literacy Initiative

Expand the capacity to provide adult literacy services throughout Region 8. This Initiative will provide literacy volunteer training and program development training to counties on how to establish Community Literacy Centers; provide financial resources for training, books and supplies for up to five Centers; and, host an Adult Literacy Research & Training Symposium at Western Michigan University. The Initiative intends to strengthen literacy services on a regional level; better align instruction practices toward workforce development and adult education outcomes; and, establish a system of support to sustain the infrastructure for literacy services in the Region.

- Encompasses the entire 7-county area of Region 8
- Partners include the Literacy Councils of Branch County and St. Joseph County, Goodwill Industries of Southwest Michigan, Western Michigan University, and Adult Literacy Collaborative of Kalamazoo County.
- Furthers Education Opportunity: 'Rebuild and focus assets on developing infrastructure for reaching adult illiterate population.'

INFRASTRUCTURE PROJECTS

Lorem Ipsum

Cupic natiam mantemus vehebat. Od sim et quem dea etratiam, quam aueret effrem opondientia confena, st fecri publient? O tifeccure conte, ut gra? An vitiae converemorei se consus, consullaberi in simo maximiur hora viri senirmilnem

Portage English as a Second Language (ESL) Program

Offer free ESL courses to help the rapidly growing number of non-native speakers of English to become successful, engaged members of the communities of Region 8 and to better coordinate and support literacy services throughout the Region. The program will promote accessibility to education; encourage a culture of learning; and develop a communication conduit for existing education organizations.

- Encompasses the entire 7-county area of Region 8
- Partners include the Kalamazoo Literacy Council, Adult Literacy Collaborative of Kalamazoo County, Prince of Peace Lutheran Church, and Portage Public Schools.
- Furthers Education Opportunity: 'Rebuild and focus assets on developing infrastructure for reaching adult illiterate population.'

RPI STRATEGIES PROJECTS

Regional Communication Software:

Develop a software tool that will allow RPI partners to share in project management, communication, and the distribution of important information that will help to form future partnerships. This tool will be used to invite organizations within the Region to participate in projects that match their organizational goals and strategies. This tool will also allow for projects to be conducted and regular updates provided without cumbersome face to face meetings.

The Regional Dashboard represented an early hurdle for Region 8. As a result, targeted efforts were made in 2015 to ascertain desired dashboard parameters and production options that would be cost-effective and allow for ease of use and maintenance. Region 8 has been working with Purdue University in the development and successful launch of the dashboard.

Dashboard Development

2015

2016

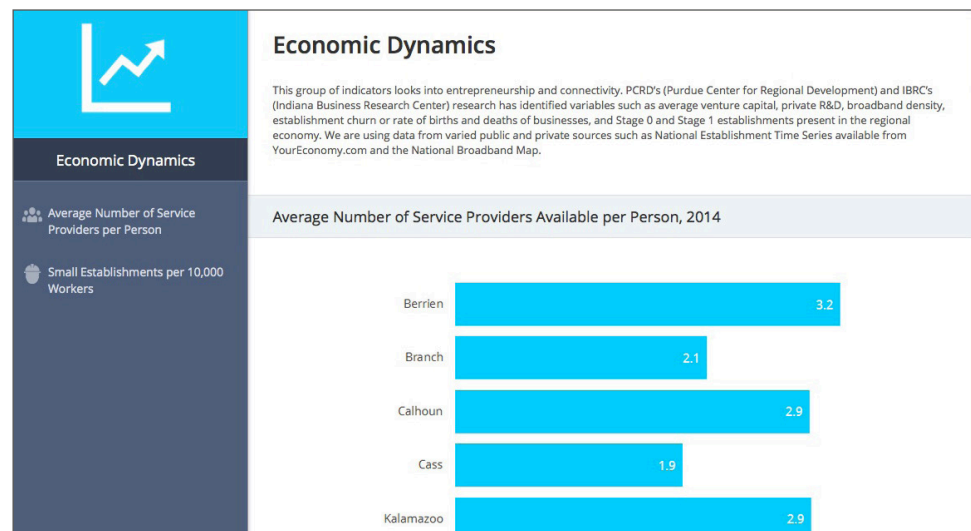
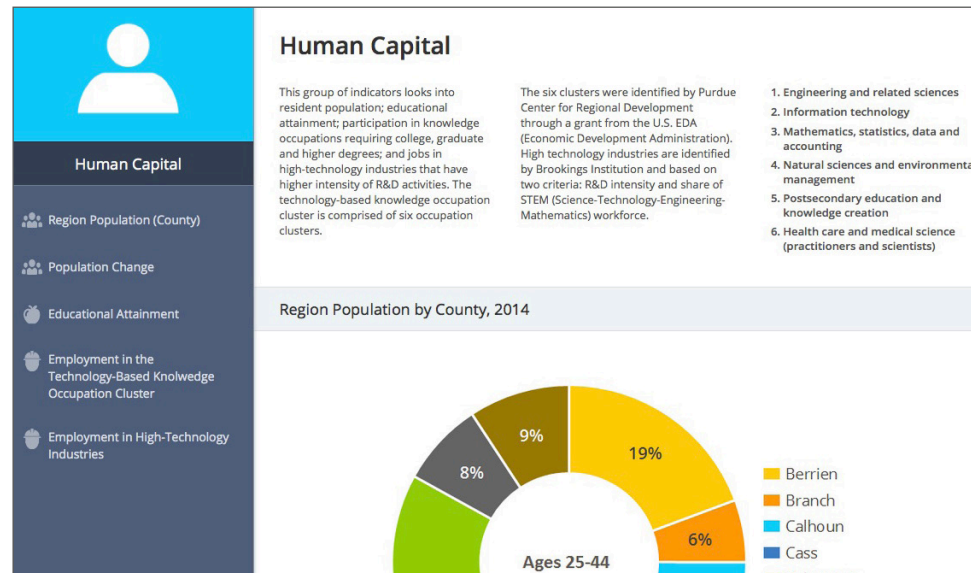
RPI Staff Works with State Regions to Identify Dashboard Parameters

Use of Asset Inventory to Build and Improve Regional Dashboard

Collaboration with Regions 3 & 4 on Dashboard Development

Successful Launch of Regional Dashboard

Sample Dashboard Content



SOUTHWEST MICHIGAN REGIONAL PROSPERITY INITIATIVE
PURDUE CENTER FOR REGIONAL DEVELOPMENT

Home Dashboard

Human Capital

Economic Dynamics

Productivity & Employment

Economic Well-Being

SOUTH
WEST
MICHIGAN
REGIONAL
PROSPERITY
INITIATIVE

SW MI RPI

- Human Capital
- Economic Dynamics
- Productivity & Employment
- Economic Well-Being

Southwest Michigan Regional Prosperity Initiative

Counties Covered

Additional Information

This performance dashboard has been developed as a tool to reflect progress on the Region's annual goals and identify their regional impact. The Region 8 Performance Dashboard has been developed by the Purdue Center for Regional Development. With the Region's Vision as guide, and a clear understanding of the Region's strengths and where the gaps currently exist, solid opportunities for regional collaboration across sectors have been identified. The organization of these opportunities produced 4 clear goal areas: Community Development, Education, Infrastructure and RPI Strategies.

The Region 8 – RPI Collaborative is energized by the successes of 2015 and prepares to gauge the readiness for the 'next steps'. With the adoption of the 5-Year Prosperity Plan – Volume 2 and the expenditure of funds on supported action strategies. The Collaborative will explore how best to continue its work toward fostering regional economic prosperity.

2015

1 YEAR 1

In addition to meeting RPI Tier 1 requirements, the Region 8 RPI Collaborative experienced several fundamental successes key to working within the Regional Prosperity Initiative.

- Regional partners worked hard to find the unique role that the RPI Collaborative could fill in Region 8 and see the work of the Collaborative in the context of existing regional collaboration.
- Familiarity and trust was built both between regional partners and the organizations they represent.
- The Collaborative focused on building the foundations on which Year 2 action strategies would be based . . . for successful long-term working relationships.

2 YEAR 2

Region 8 continued through Year 2 as an RPI Collaborative (Tier 1) with a focus on developing and funding action strategies of regional significance that implement the 5-Year Prosperity Plan. With the adoption of Volume 2 of the Plan that sets forth identified action strategies, the Collaboration will:

- Communicate and Disseminate the 5-Year Prosperity Plan – Volumes 1 & 2
- Fund and Monitor Selected Projects
- Initiate RPI Strategies Project: Regional Communications Software
- Determine 'Next Steps'

Next Steps

YEAR 3...AND BEYOND

1. Use of the four RPI goals as the organizing principle of the Collaborative - not the five original sectors.
2. The future of the Collaborative:
 - What is the desired end goal? (ie. Tier 3 status)
 - What will the RPI have accomplished by the end of Year 4?
 - Will the State support and provide additional targets for continuing Collaboratives?
3. Formalize a process to help interact with state agencies in a more substantive way.
4. Monitor funded projects.
5. Review projects that did not receive funding for improvement.
6. Improve RPI outreach.
7. Advance cross-sectoral projects that bridge multiple RPI goals:
 - Bring-in expert presentations on successful cross-sectoral projects.
 - Add 'cross-sector/cross-goal' criterion in project ranking.
8. Add 'Project- Specific' element to the Regional Dashboard

Appendix: Region 8 Asset Inventory

COMMUNITY DEVELOPMENT

- Community Development Investment Programs
 - Non-Motorized Transportation System
 - Public Transit Service Areas
 - Parks and Rec Areas
- % Renter Units Affordable to 80% HAMFI
 - Natural Areas

EDUCATION

- School Districts
- Educational Attainment Residents 25+ w/ H.S. Diploma or Higher
- Educational Attainment Residents 25+ w/ Assoc. Degree or Higher
 - Educational Related Institutions

INFRASTRUCTURE

- Intercity Bus Service
 - MI Railroad System
- MI intercity Passenger Rail System
 - Freight Movement
 - Projected Freight Movement
 - Freight Mode Distribution
 - Areas w/out Broadband
- Crowdsourced User Feedback
 - Active Solid Waste Landfills
- MI Landfill Capacities & Lifespans
- MI Landfill Imported Waste by Origin
 - Energy Production
- Broadband Available by Type